



KGI Power Trader - iPhone User Manual

Version 2.1
March 2022

Contents

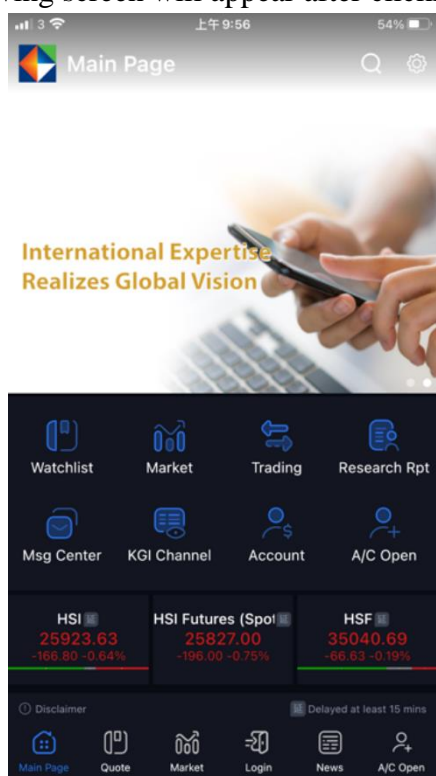
1. Login Process	3
2. Main Page	6
2.1 More	7
2.1.1 Settings	8
2.1.2 Change Password	10
2.1.3 Device Management	11
2.1.4 Login Information	12
3. Quote	13
3.1 Detail Quote	13
3.2 Reorder	19
3.3 Watchlist	21
4. Account	27
4.1 Menu Bar	27
4.2 Position	28
4.3 Order Book	31
4.4 Trade Summary	34
5. Trading	36
5.1 Stock Trading	36
6. News	44
7. Logout Procedure	45

1. Login Process

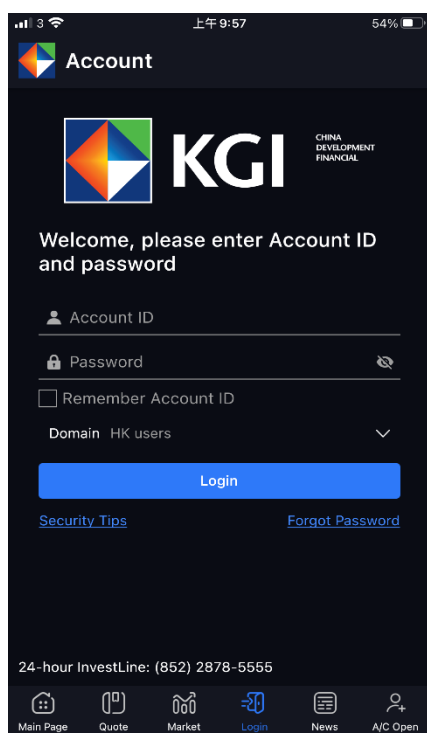
1. Download and install “KGI Power Trader” app, the icon will appear as below.



2. The following screen will appear after clicking the “KGI Power Trader” app icon



3. Click “Login” symbol, the below screen will appear.

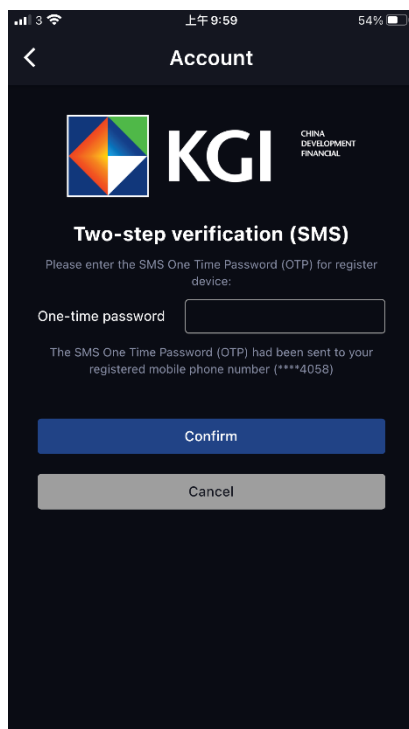


4. Enter your Account ID and Password, choose your Domain, then click [Login].

Note:

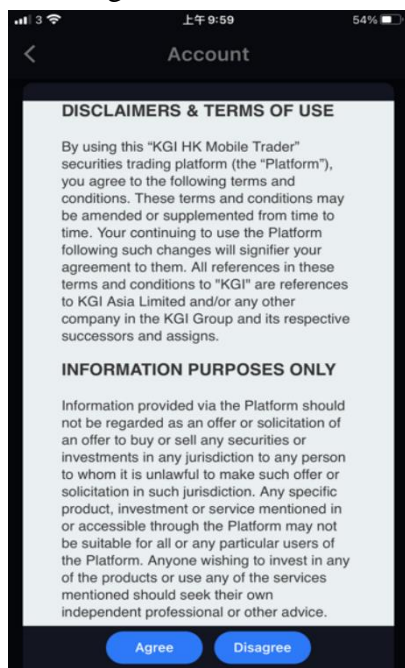
- You can check the box [Remember Account ID] to store your Account ID for your convenience.
- As “KGI Power Trader”, “WebTrade” and “WebTrade-Professional Version” share the same password, changing your password in any system will result in changing for all systems.

5. If you have not registered Two-Factor Authentication, then the below screen will appear after clicking [Login]



You will receive a one-time password via SMS to your registered mobile phone. Enter the one-time password to complete the Two-Factor Authentication and device registration. During the validation period, you are not required to register again if you use a registered device to login.

6. Upon successful login, the disclaimer will appear.

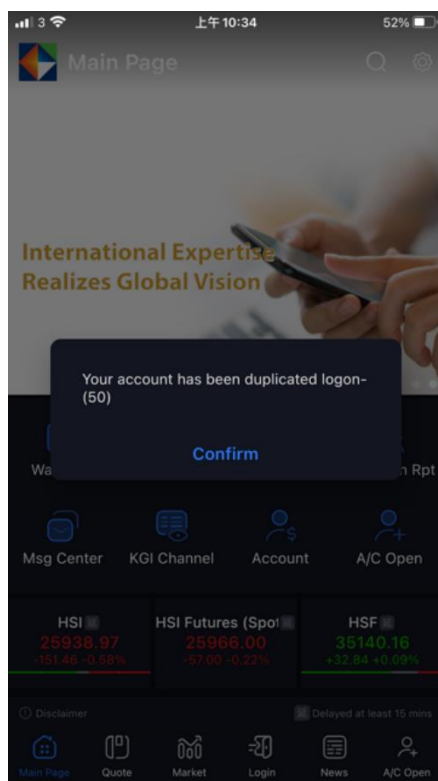


7. Read the disclaimer carefully and press [Agree] to enter the Home Menu.

8. It will be redirected to the Login Page if [Disagree] is selected.

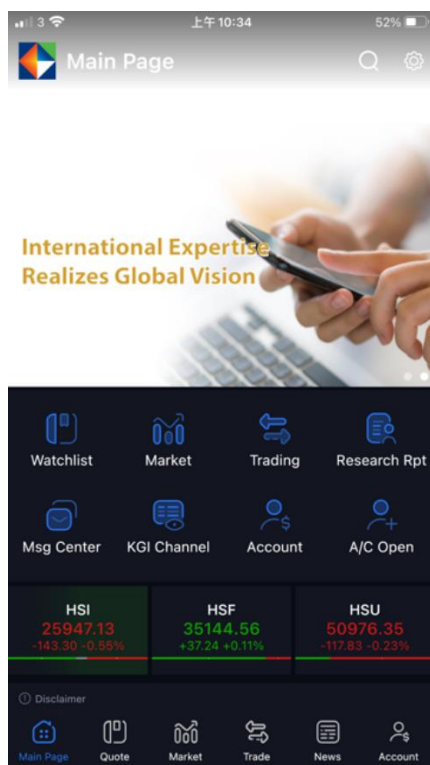
9. Duplicate Login

“KGI Power Trader” does not allow duplicate login. If you login more than one system simultaneously, you will be treated as duplicate login. The previously (logged in) system will be logged out automatically and you will receive the below duplicate login message.



2. Main Page

You can access to many functions of this app at the “Main Page”



“Watchlist” – You can set your frequently viewed stocks for monitoring

“Market” – You can view different market information

“Trading” – Trade at anytime

“Research Report” – You can view research report according to different industries, stocks, etc.

“Message Centre” – You can receive important market or account messages

“KGI Channel” – You can watch video regarding market analysis

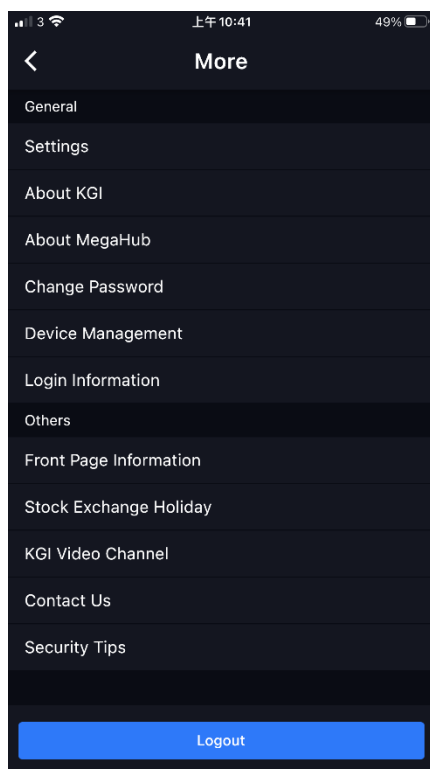
“Account” - You can view your account information, eg: positions and cash balance

“Account Open” – You can open an account online

2.1 More

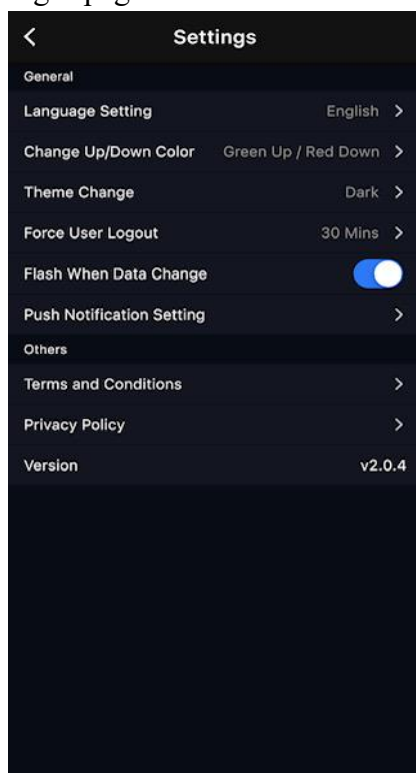
You can enter “More” page by clicking the Gear icon at the upper right corner of Main Page.

You can view different information and set up your own preference on “More” page.



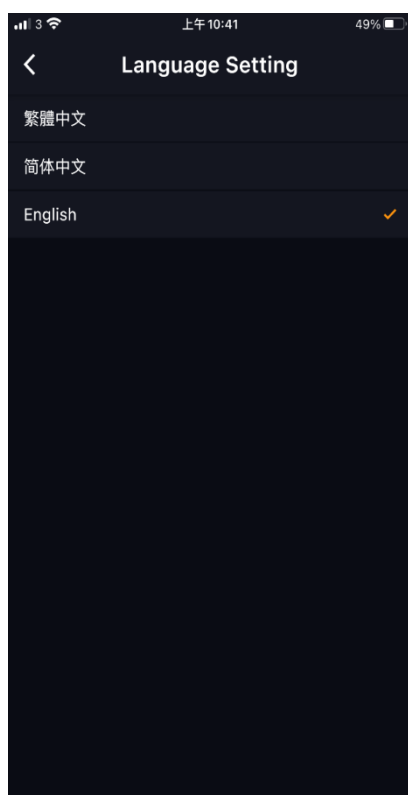
2.1.1 Settings

You can set your own preference, including “Language Setting”, “Theme change”, etc. under “Settings” page.



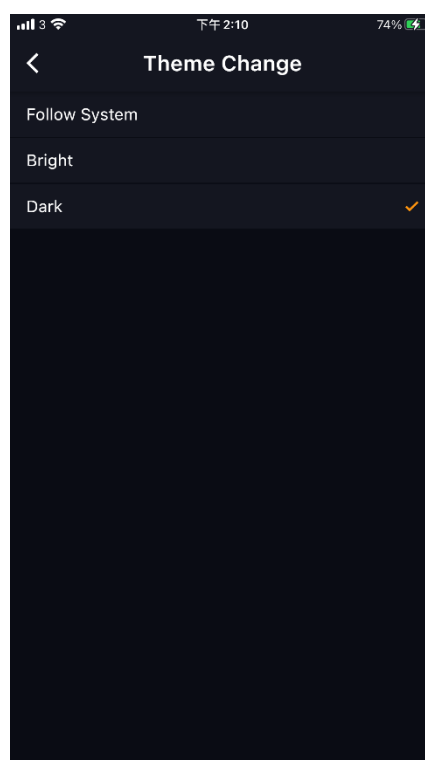
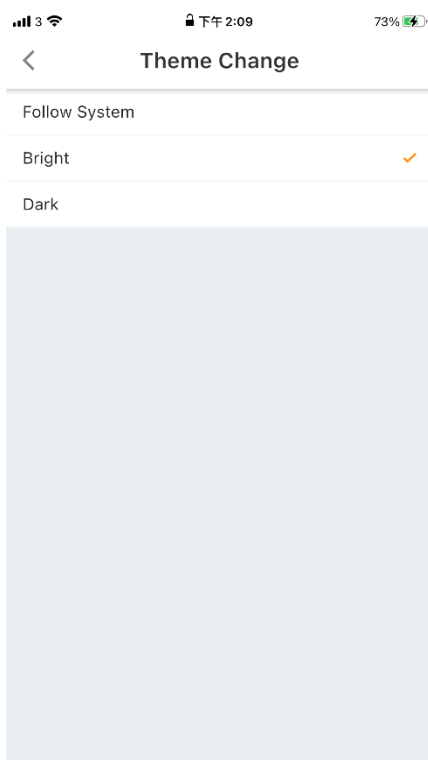
2.1.1.1 “Language Setting”

You can choose Traditional Chinese, Simplified Chinese or English to operate the app under “Language Setting” under “Settings” page.



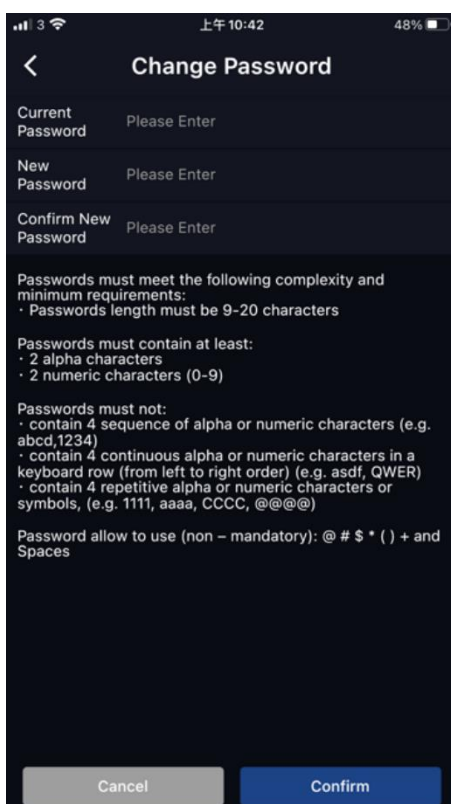
2.1.1.2 “Theme Change”

You can change the theme to Bright or Dark under “ Theme Change” under “Settings” page.



2.1.2 Change Password

“KGI Power Trader” has password change function. You can click “Change Password” under “Settings” page.

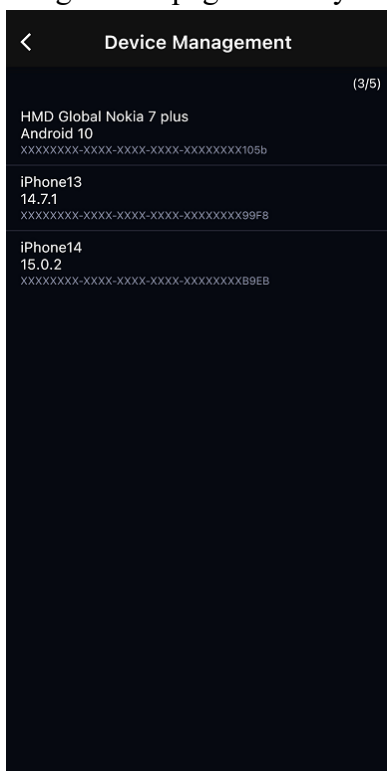


Note: As “KGI Power Trader”, “WebTrade” and “WebTrade – Professional Version” share the same password, changing password in any system will result in changing for other systems

simultaneously.

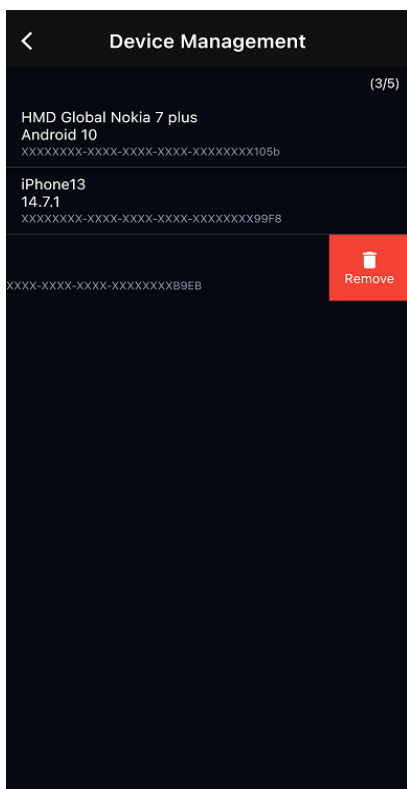
2.1.3 Device Management

“Device Management” page can let you view or delete any registered device.



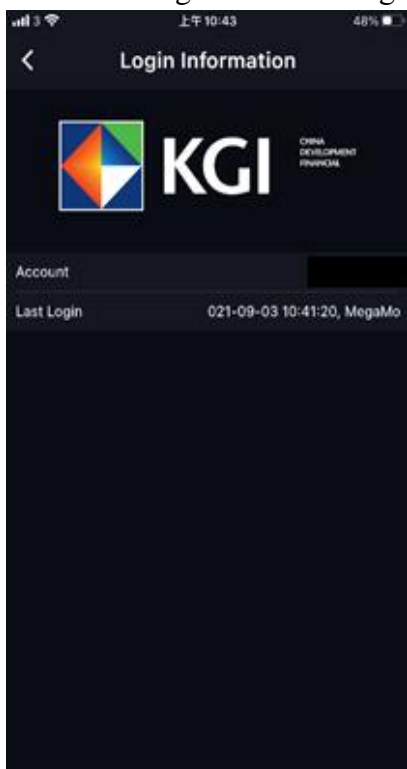
Note: After reaching the device registration limit, you are required to delete at least one device in order to add a new one.

If you want to delete a registered device, you just need to press the registered device that you would like to delete. Then slide to the left and press Remove.



2.1.4 Login Information

You can see the last login time on “Login Information” page.



3. Quote

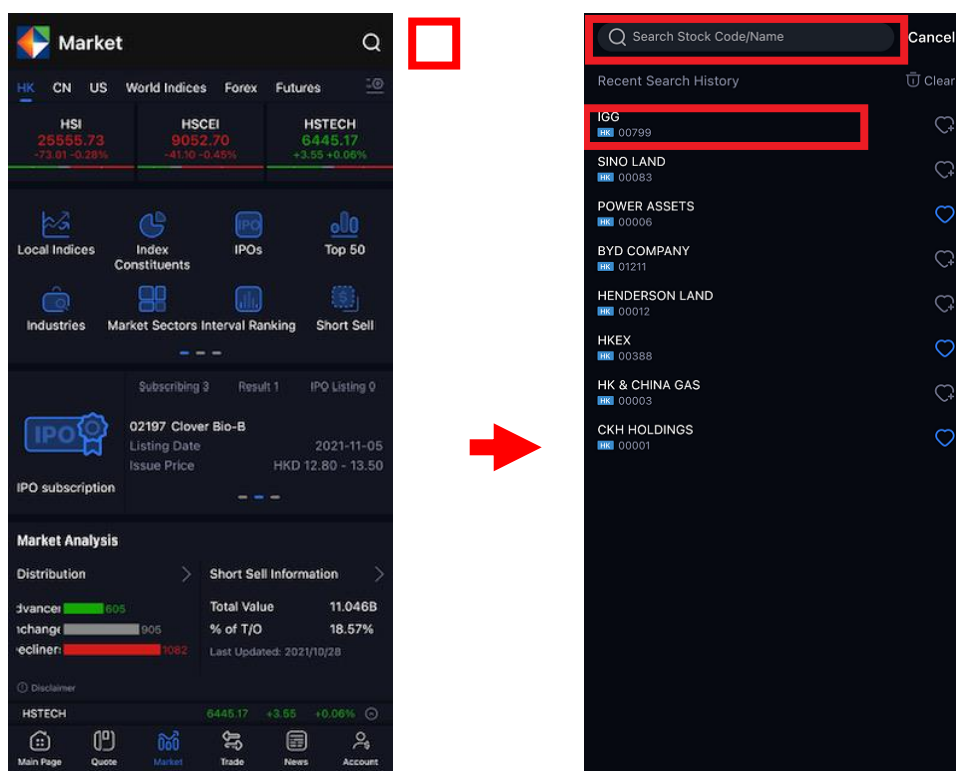
“KGI Power Trader” provides stock quotation of different markets, including Hong Kong Stock, US Stock, SH/SZ Connect.

Note: For US quote service, you’ll need to complete and submit an online subscription form.

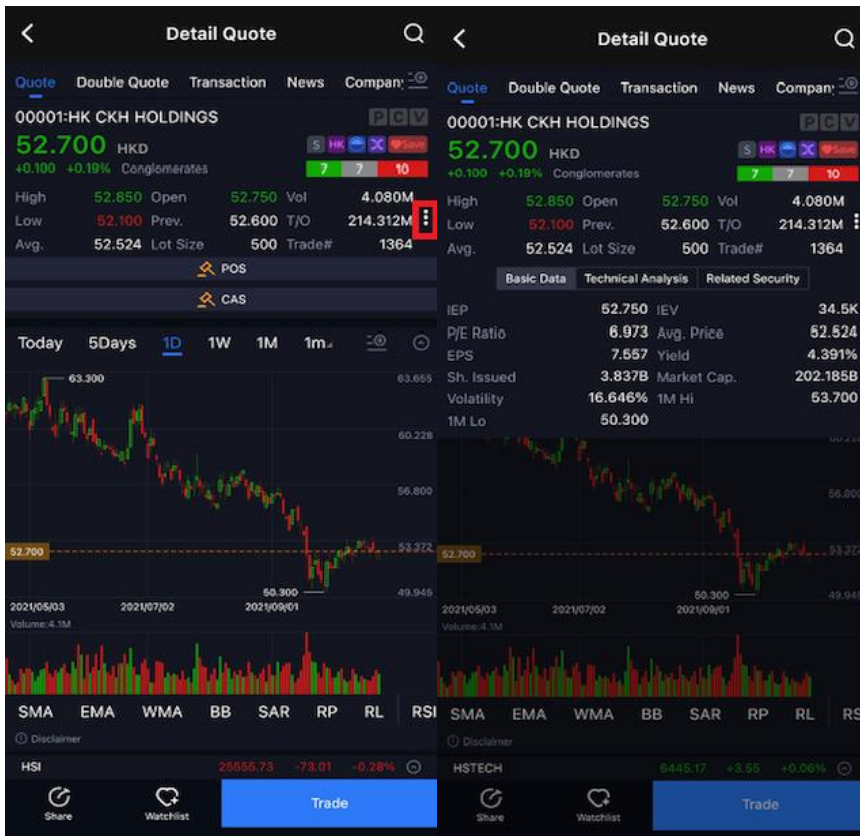
3.1 Detail Quote

To check the stock price on the “Quote HK Share” page, you can click the  icon:

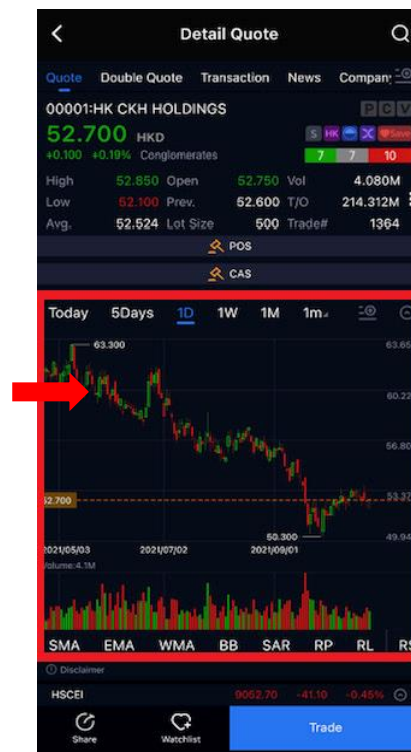
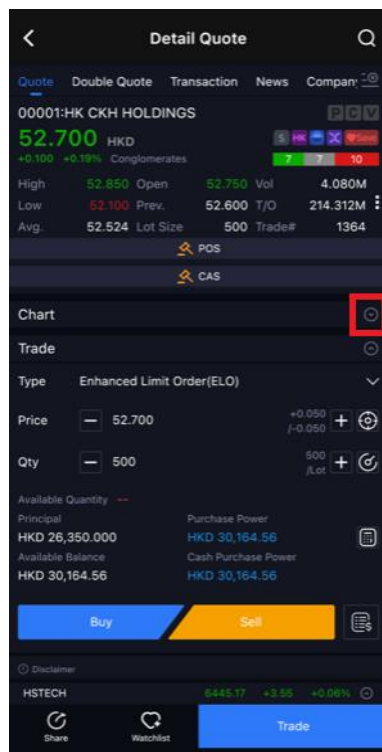
- Input the stock code/stock name, then click the stock or click the stock in Recent Search History.



You can click  to view Basic Data, Technical Analysis, Related Security



A larger chart with different time interval, chart comparison will be displayed once you click on the chart.





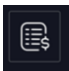
You can place order on the “Detail Quote” page, and input the following items:

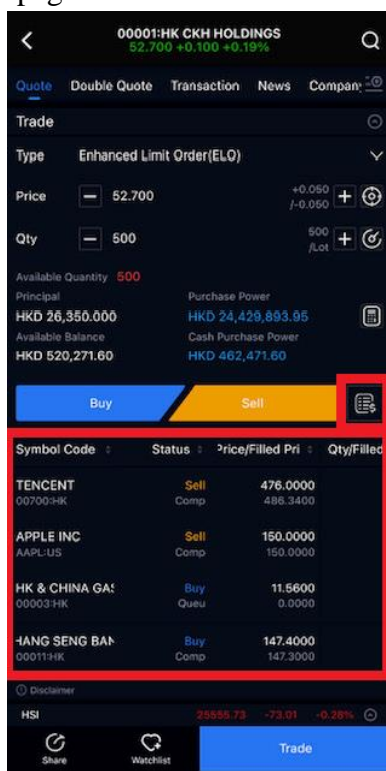
I. Order Type


II. Price

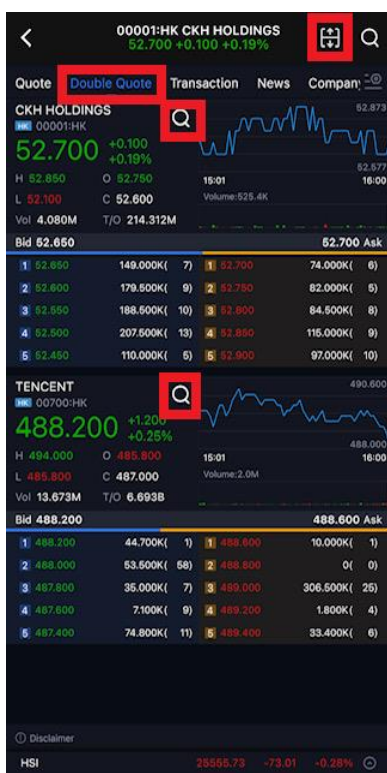
III. Quantity (Qty)

Finally, select “BUY” or “SELL”.

You can click  icon to view the order book’s order status, executed price and etc within the same page.



You can watch two quotes simultaneously on the “Double Quote” page, and the display mode can be changed by clicking  icon at the top-right corner.



You can read relevant news about stock on the “Info” page.



You can view relevant stock information about that industry on the “Related Industry” page.



00001:HK CKH HOLDINGS
52.700 +0.100 +0.19%

History Transaction Company Info **Related Industry**

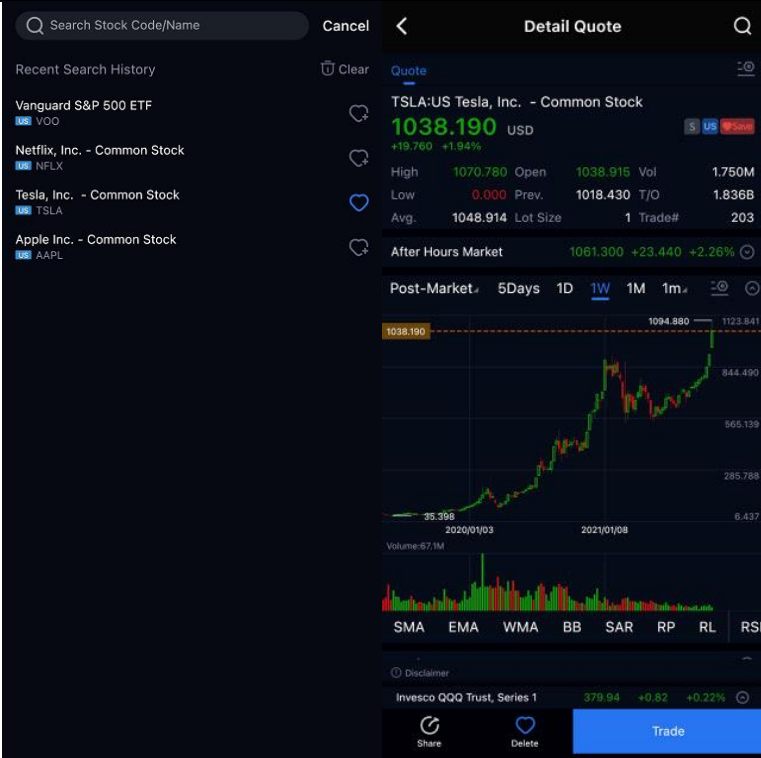
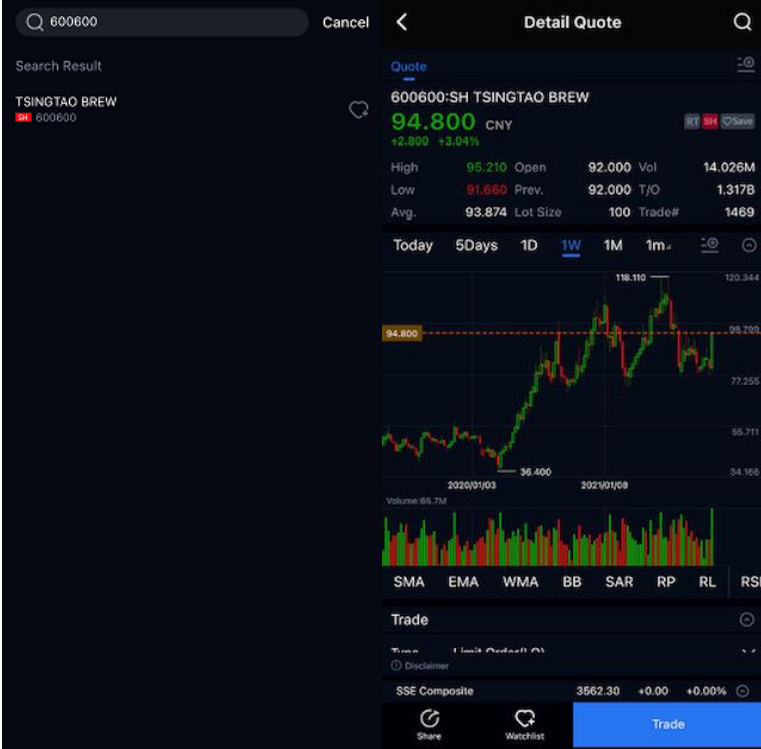
Conglomerates 7 8 9

	Nominal	Chg%	Chg
CHINA INV HOLD 00132	0.450	+13.92%	+0.055
VONGROUP 00318	0.445	+4.71%	+0.020
KING STONE ENGY 00663	0.046	+2.22%	+0.001
CHEVALIER INT'L 00025	9.730	+1.78%	+0.170
SWIRE PACIFIC A 00019	49.150	+0.51%	+0.250
CKH HOLDINGS 00001	52.700	+0.19%	+0.100
FOSUN INTL 00656	9.140	+0.11%	+0.010
GOLDIN FIN HOLD 00530	0.223	+0.00%	+0.000
TIANJIN DEV 00882	1.720	+0.00%	+0.000
GLORY SUN FIN 01282	0.275	+0.00%	+0.000
HK CHAOSHANG GP 02322	0.910	+0.00%	+0.000
MADISON HLDG 08057	0.127	+0.00%	+0.000
CHINESE STRAT	---	---	---

Disclaimer


3.1.1 US Share Quote and SH/SZ Connect Quote (Only for post-login)

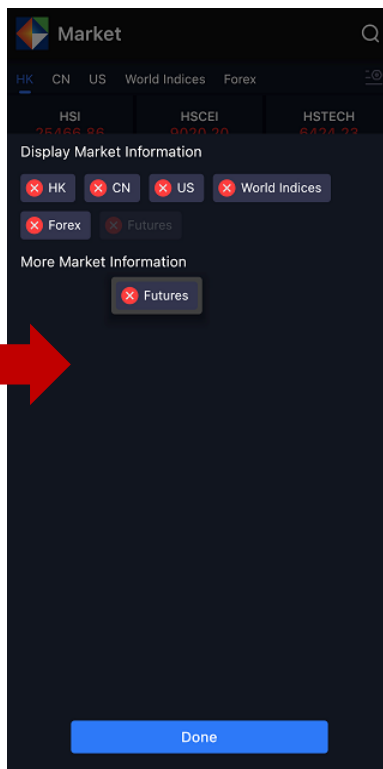
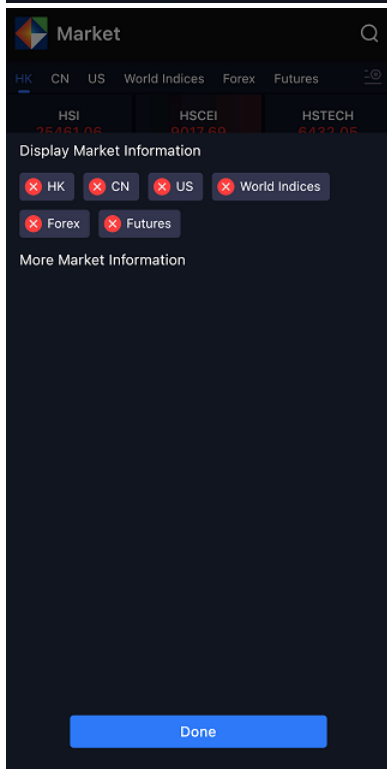
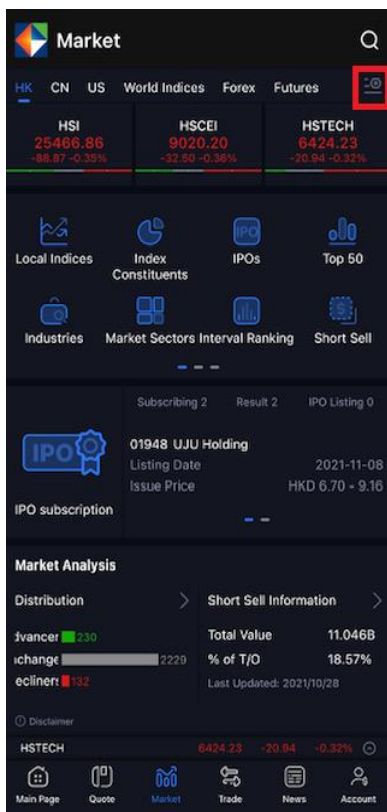
- Only applicable for users who have subscribed for US Share Quotes or SH/SZ Connect Quotes

<p>Quote US Share</p>	 <p>Search Stock Code/Name Cancel < Detail Quote</p> <p>Recent Search History</p> <ul style="list-style-type: none"> Vanguard S&P 500 ETF VOO Netflix, Inc. - Common Stock NFLX Tesla, Inc. - Common Stock TSLA Apple Inc. - Common Stock AAPL <p>Quote</p> <p>TSLA:US Tesla, Inc. - Common Stock</p> <p>1038.190 USD</p> <p>+19.760 +1.94%</p> <p>High 1070.780 Open 1038.915 Vol 1.750M</p> <p>Low 0.000 Prev. 1018.430 T/O 1.836B</p> <p>Avg. 1048.914 Lot Size 1 Trade# 203</p> <p>After Hours Market 1061.300 +23.440 +2.26%</p> <p>Post-Market 5Days 1D 1W 1M 1m</p> <p>1038.190 1094.880 1123.841</p> <p>844.490</p> <p>865.139</p> <p>285.788</p> <p>6.437</p> <p>35.398</p> <p>2020/01/03 2021/01/08</p> <p>Volume:67.1M</p> <p>SMA EMA WMA BB SAR RP RL RSI</p> <p>Disclaimer</p> <p>Invesco QQQ Trust, Series 1 379.94 +0.82 +0.22%</p> <p>Share Delete Trade</p>
<p>Quote SH/SZ Connect</p>	 <p>Search Stock Code/Name Cancel < Detail Quote</p> <p>Search Result</p> <p>TSINGTAO BREW</p> <p>600600</p> <p>Quote</p> <p>600600:SH TSINGTAO BREW</p> <p>94.800 CNY</p> <p>+2.800 +3.94%</p> <p>High 95.210 Open 92.000 Vol 14.026M</p> <p>Low 91.660 Prev. 92.000 T/O 1.317B</p> <p>Avg. 93.874 Lot Size 100 Trade# 1469</p> <p>Today 5Days 1D 1W 1M 1m</p> <p>94.800 118.110 120.344</p> <p>98.700</p> <p>77.255</p> <p>55.711</p> <p>34.166</p> <p>36.400</p> <p>2020/01/03 2021/01/08</p> <p>Volume:65.7M</p> <p>SMA EMA WMA BB SAR RP RL RSI</p> <p>Trade</p> <p>Disclaimer</p> <p>SSE Composite 3562.30 +0.00 +0.00%</p> <p>Share Watchlist Trade</p>

*The Shanghai-Hong Kong Stock Connect/Shenzhen-Hong Kong Stock Connect quotation will take effect automatically two working days after successful opening of your account and no charge will be imposed.

3.2 Reorder

Click  button to edit your order preference on subpage of “Market” by moving the buttons.

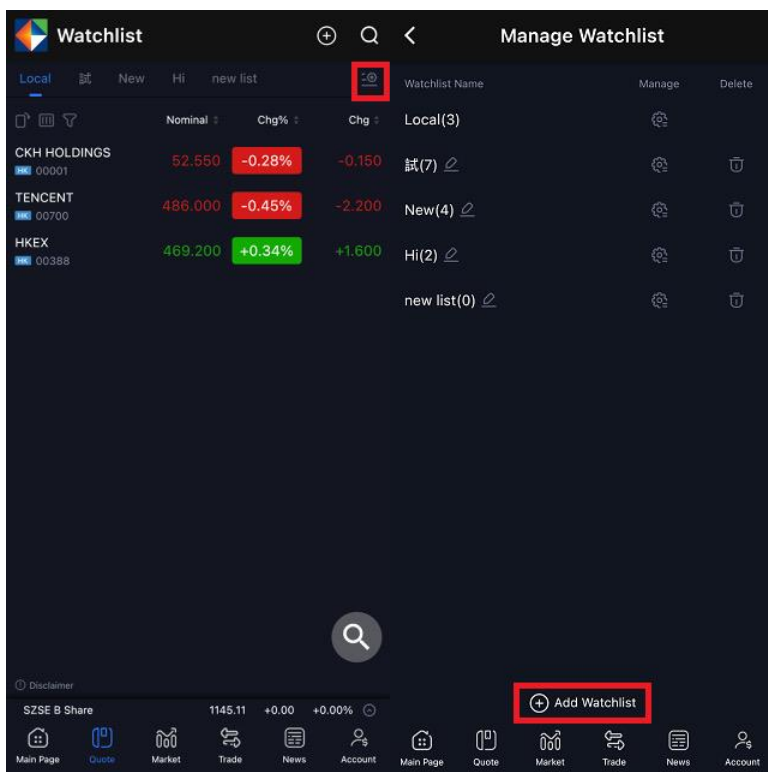


3.3 Watchlist

You can create your personal watchlist.

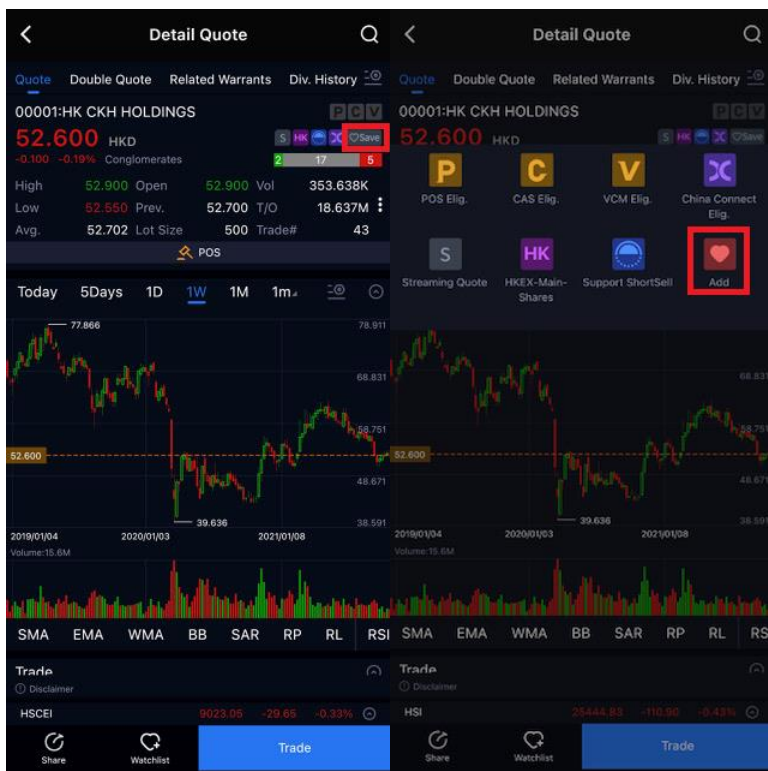
For pre-login status, you can only use default watchlist (Default-預設). You can create more watchlist after login.



Create watchlist

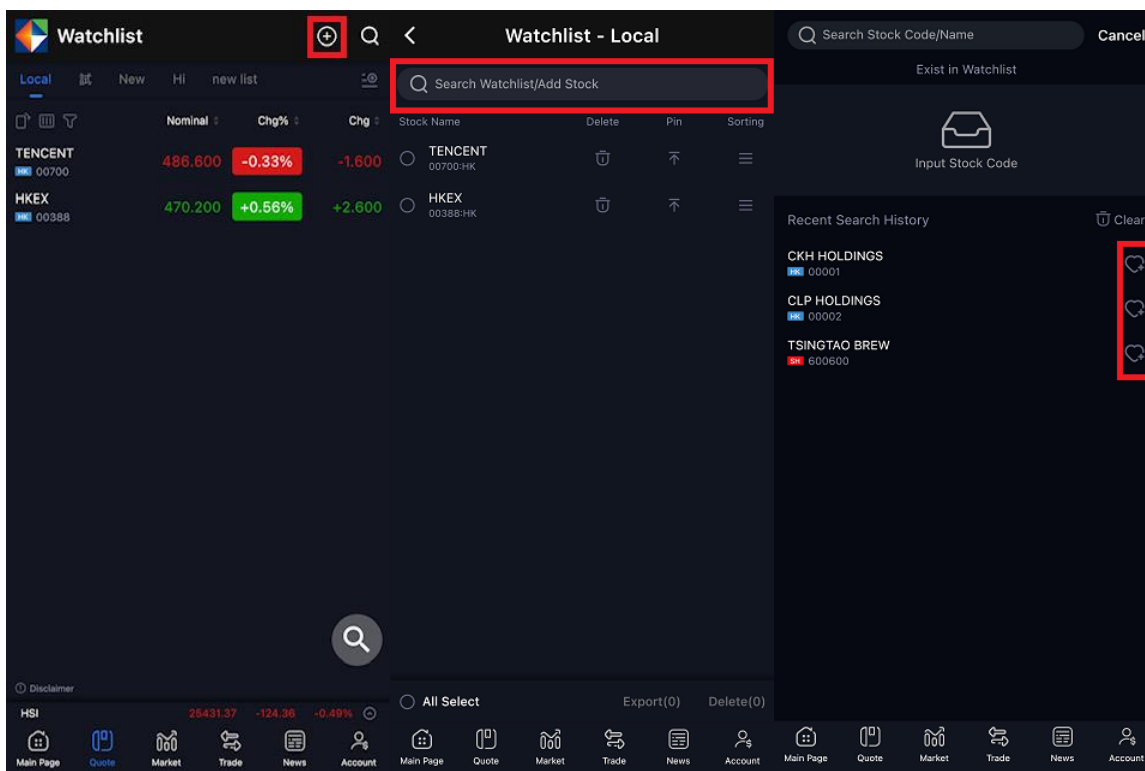


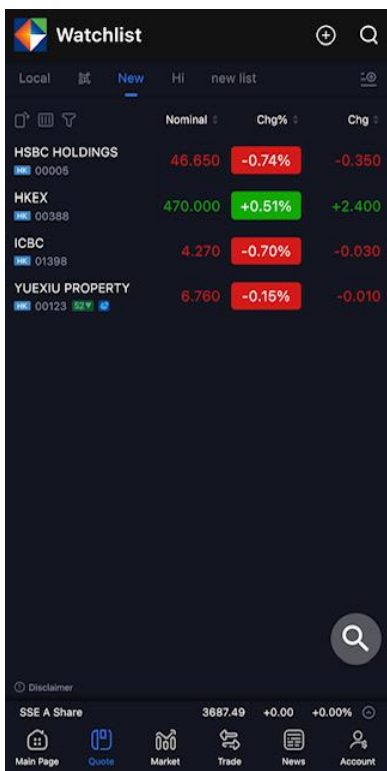
You can add stocks/indexes to the watchlist through any of following methods.

1. On the “Detail Quote” page, click  to add stock/index into watchlist.

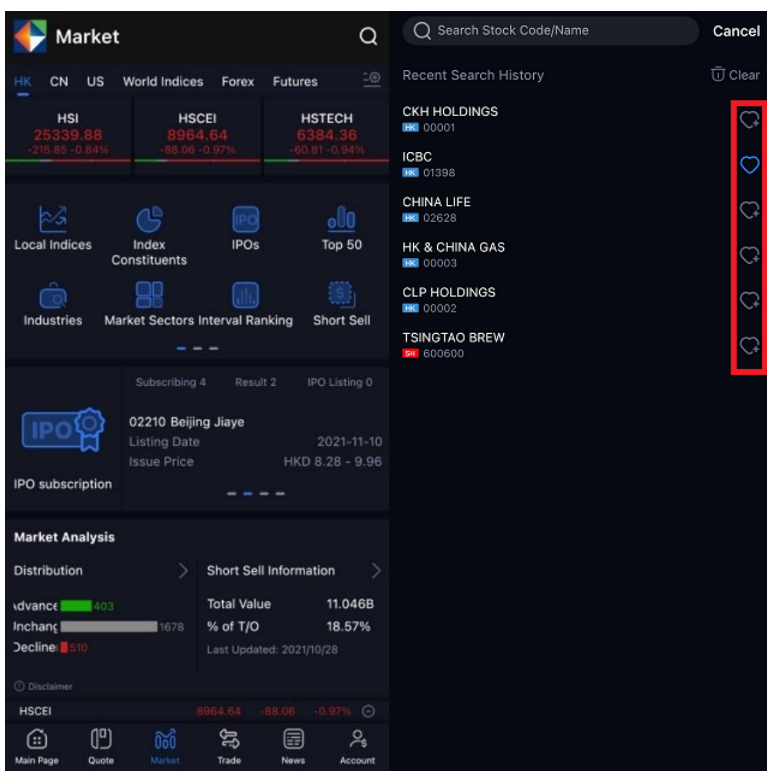


- On the “Watchlist” page, click  button at the top-right corner. Input the stock code/index, then click the heart icon .

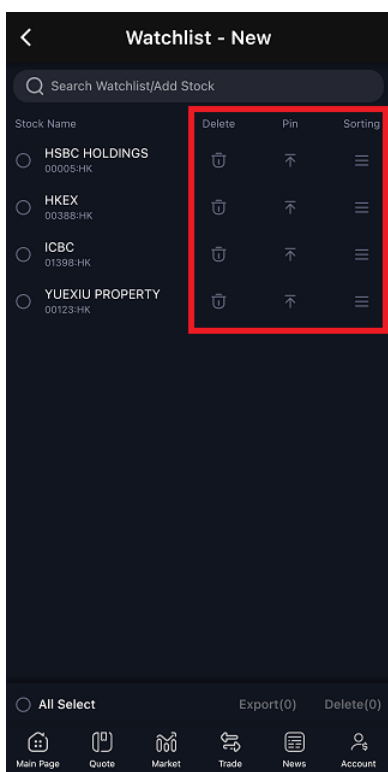




3. Input the stock code/index, then click the heart icon .

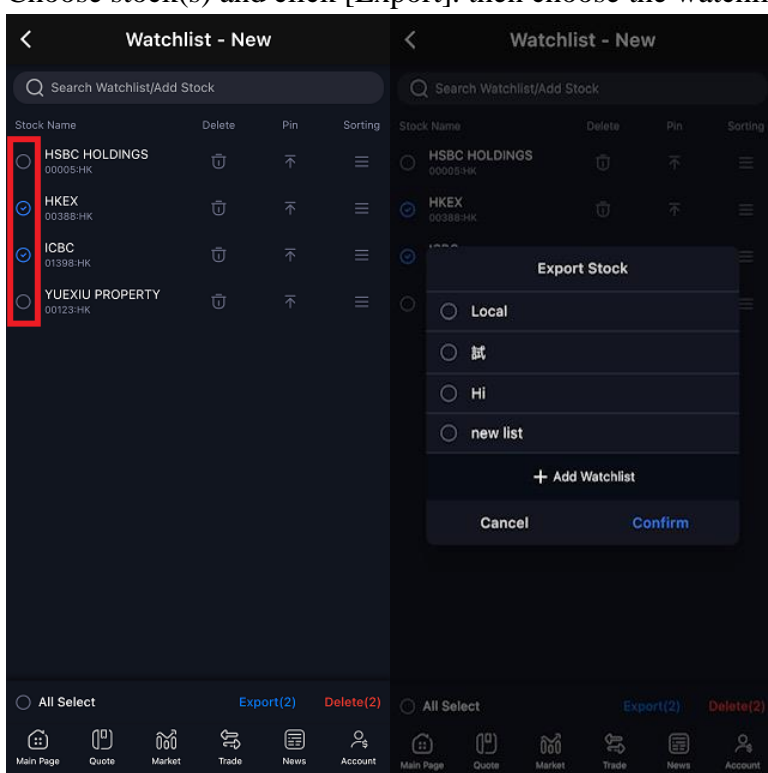


Edit the stock/index in a watchlist

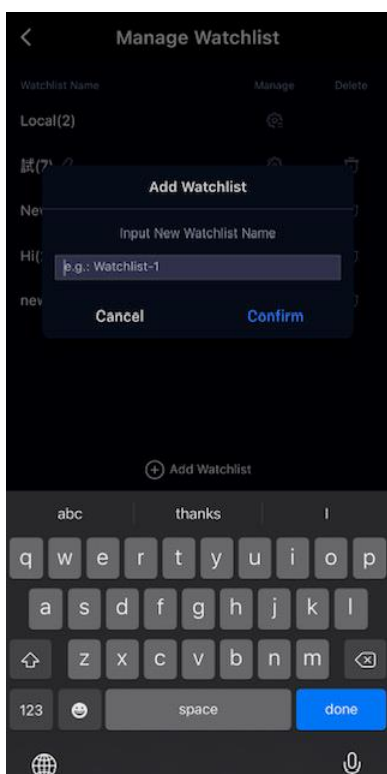



On the “Watchlist Management” page, you can choose multiple stocks, export to another watchlist or delete them.

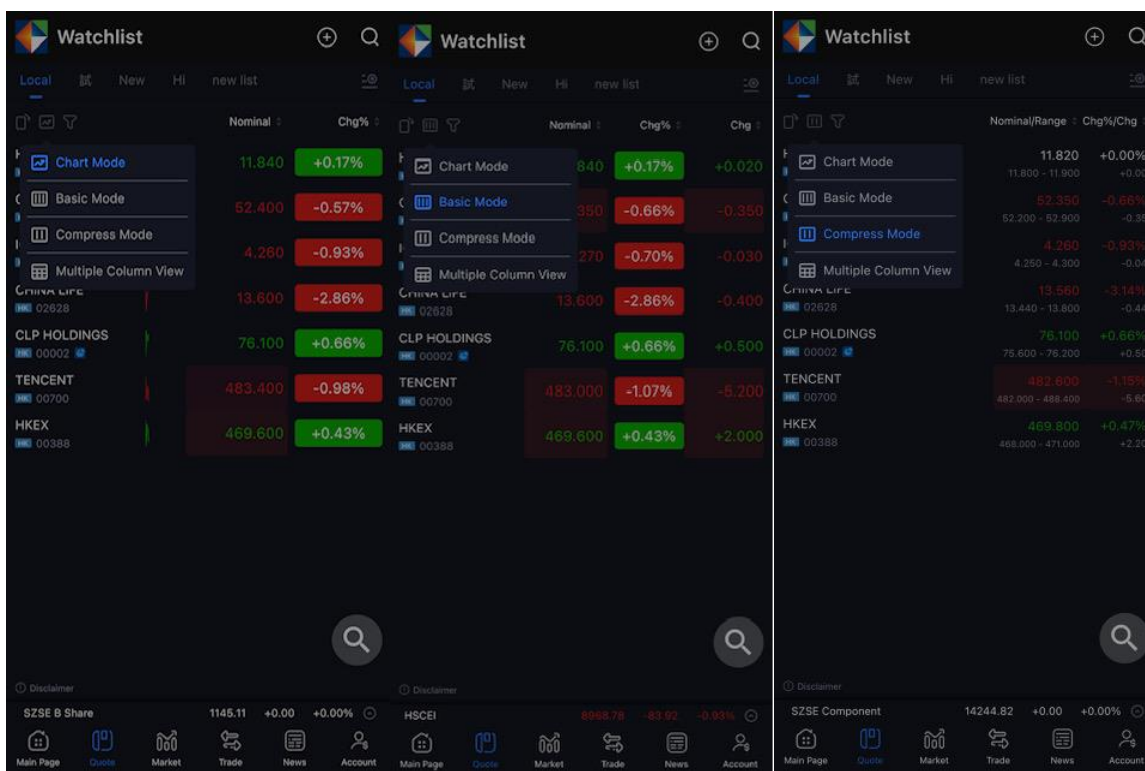
Choose stock(s) and click [Export], then choose the watchlist to export.

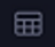


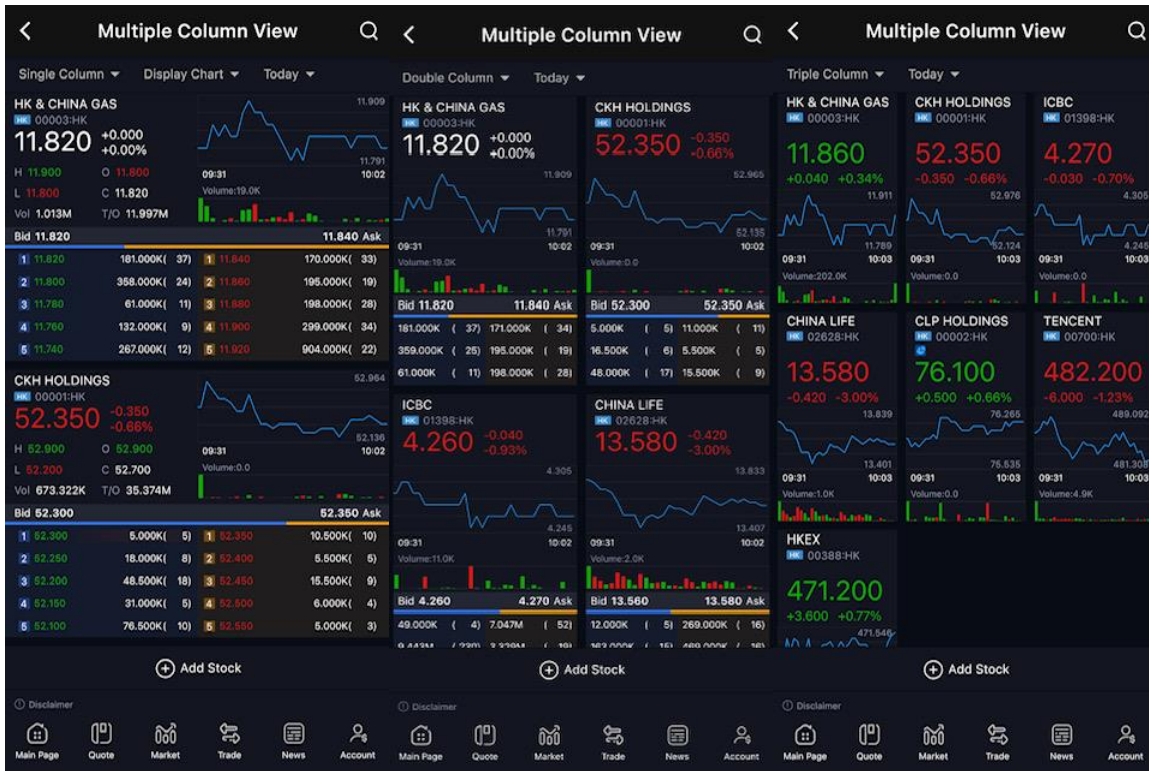
You can also create a new watchlist by clicking [Add Watchlist].



Click  icon to change to another watchlist display mode.

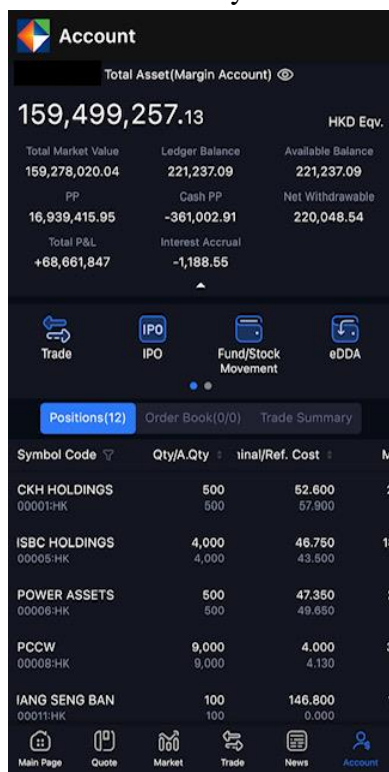


Click the  icon to view watchlist stock quotes in Multiple Column View mode.



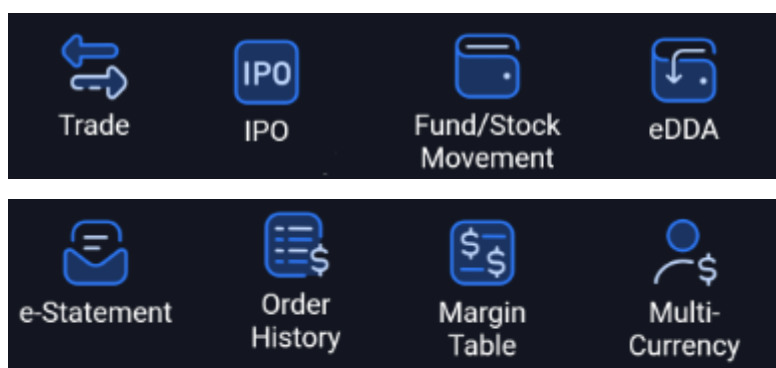
4. Account

You can check the latest account balance on the “Account” page. Balance will update automatically.



4.1 Menu Bar

You can access different functions with the “Menu Bar”.

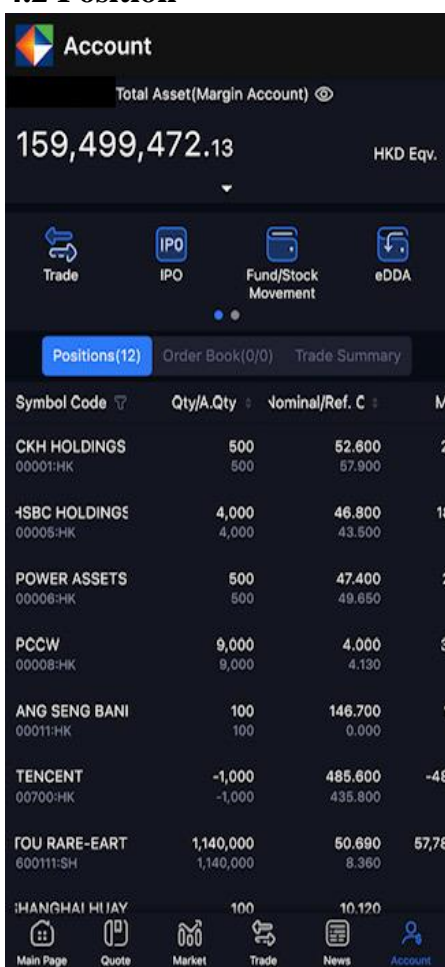


- I. Click “Trade” to go to the “Buy/Sell” page.
- II. Click “Order History” to view previous trading records, up to 21 days, including Done, Cancelled and Rejected orders. Clicking the “Symbol Code” header to select the sorting order, filter markets, trade date, direction and order status. You can also sort the list by clicking each header.
- III. Click “Fund/ Stock Movement” for “Fund Movement” and “Stock Movement”.
- IV. Click “Margin” to view the “Margin Table” of Hong Kong, Shanghai A, Shenzhen

A and US stocks. You can also view eligible securities of China Connect.

- V. Click “e-Statement” to view “Daily” and “Monthly” statement.
- VI. Click “IPO” to access IPO “Subscription” page, check “Allotment Status” and “IPO Calendar”.
- VII. Click “eDDA” to “Register” eDDA or check previous “Records”.
- VIII. Click “Multi-Currency” to view the account HKD equivalent balance. This page also displays the balances of foreign currencies.

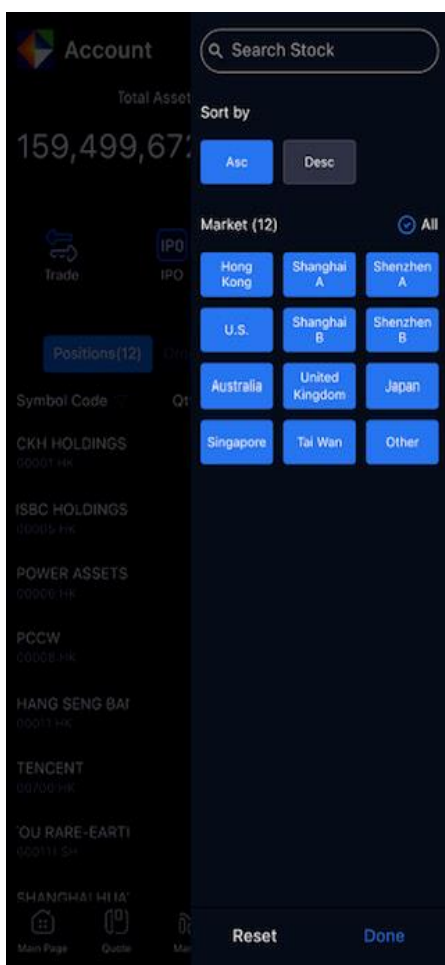
4.2 Position



1. Check Position

You can check your portfolio on the “Positions” page. Position will update automatically.

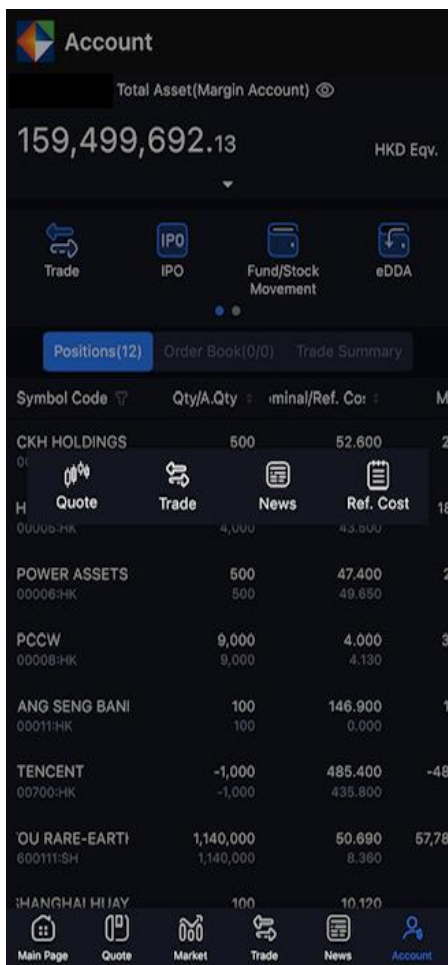
Clicking the “Symbol Code” header allows you to select the sorting order and filter markets. You can also sort the list by clicking other header.



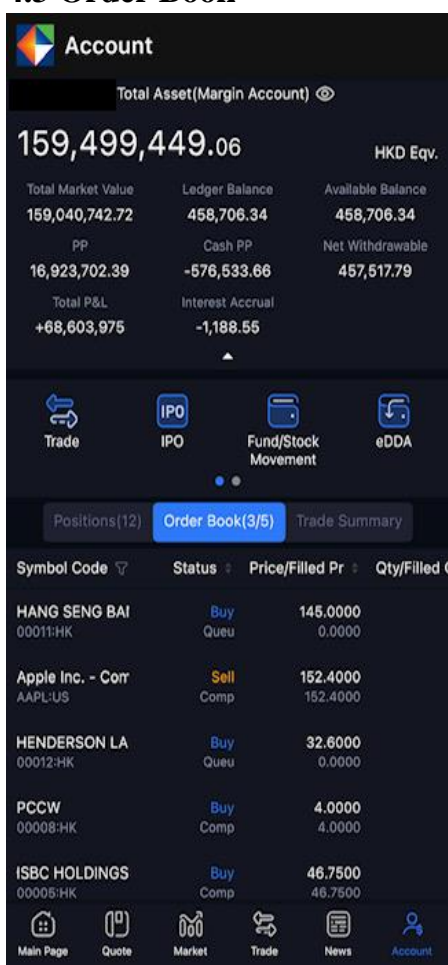
2. Further Action

You can click on the position and choose:

- I. Click “Quote” to go to the “Detail Quote” page
- II. Click “Trade” to go to the “Trade” page
- III. Click “Info” to go to the “Stock News” page
- IV. Click “Ref. Cost” to manually set reference cost

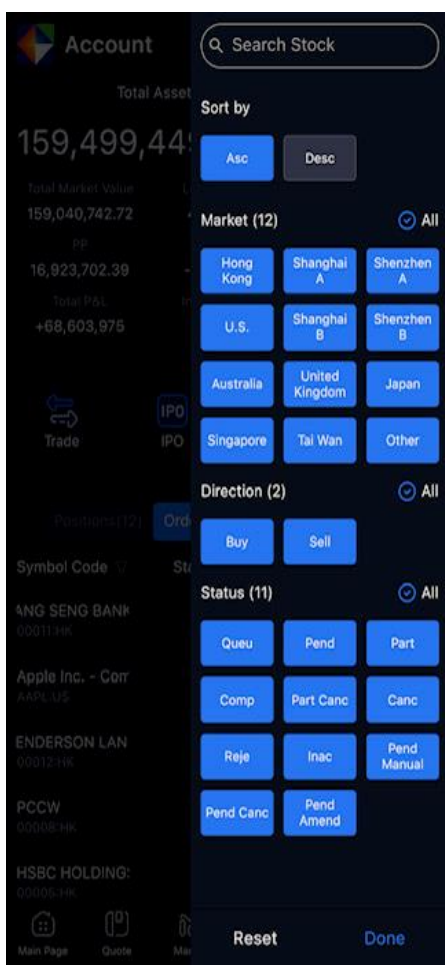


4.3 Order Book



1. Check order book

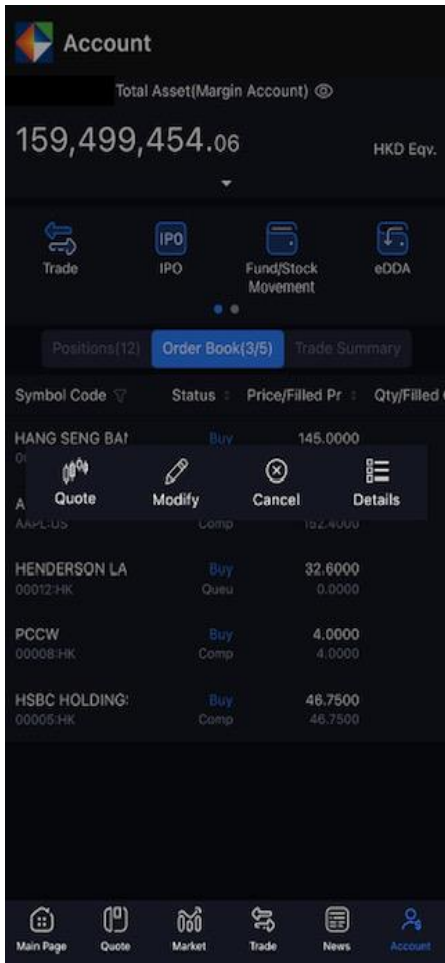
You can find today's transaction records on the "Order Book" page. You can slide the page downward to update the order details, click the "Symbol Code" header to select the sorting order, filter markets, direction and order status. You can also sort the list by clicking each header.



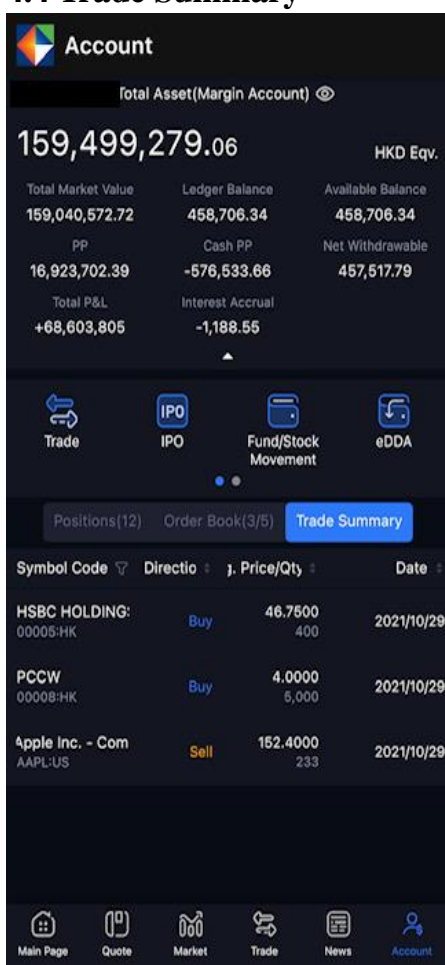
2. More Function

You can click on the order and choose:

- I. Click “Quote” to go to the “Detail Quote” page.
- II. Click “Modify” to modify order.
- III. Click “Cancel” to access a pop-up confirmation window for order cancelling
- IV. Click “Details” to go to the “Order Details” page.



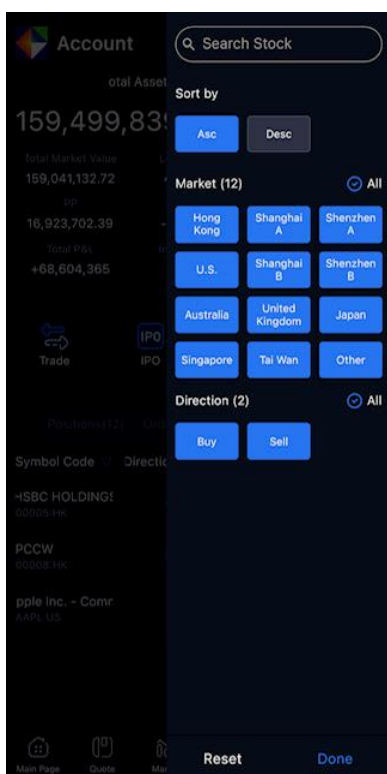
4.4 Trade Summary



1. Check trade summary

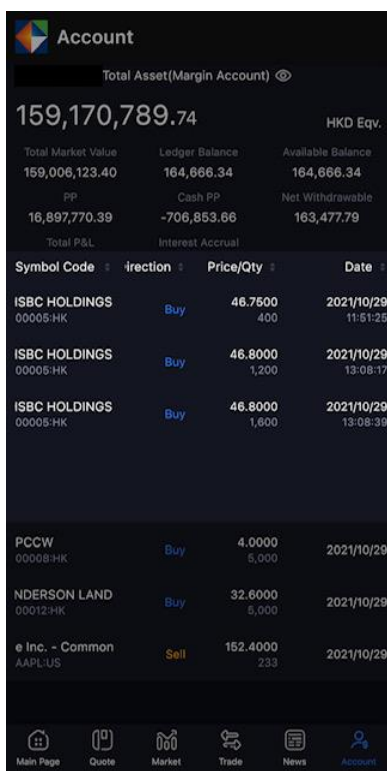
You can find today's done trade summary on the "Trade Summary" page. The summary will be sorted by symbol code and direction. You can slide the page downward to update the order details.

Click the "Symbol Code" header to select the sorting order, filter markets and direction. You can also sort the list by clicking each header.



2. More Function

You can click on the trade record and view all transaction details on the stock.



5. Trade

“KGI Power Trader” provides trade services for different markets, including Hong Kong Stock, US Stock and SH/SZ Connect.

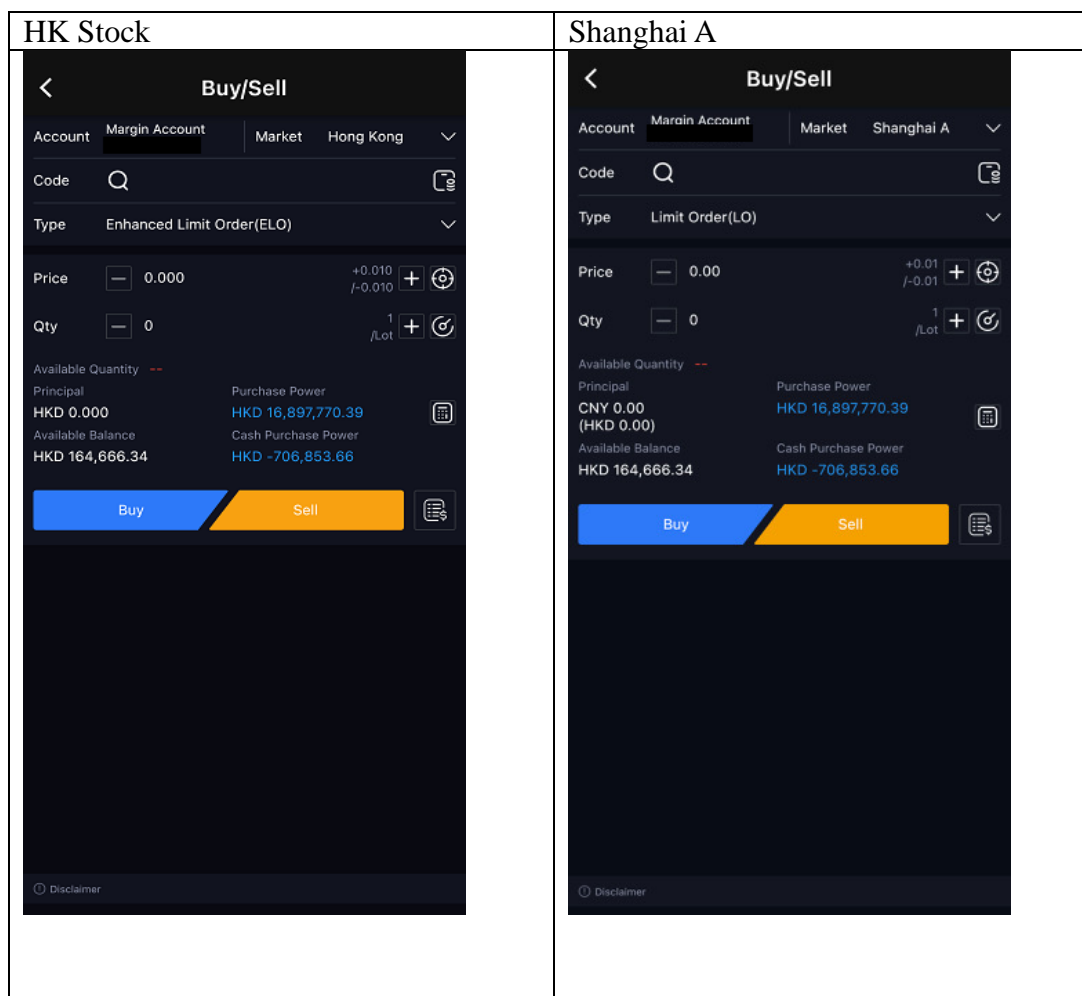
Note: If you want to trade SH/SZ Connect, you need to apply for the trading authority.

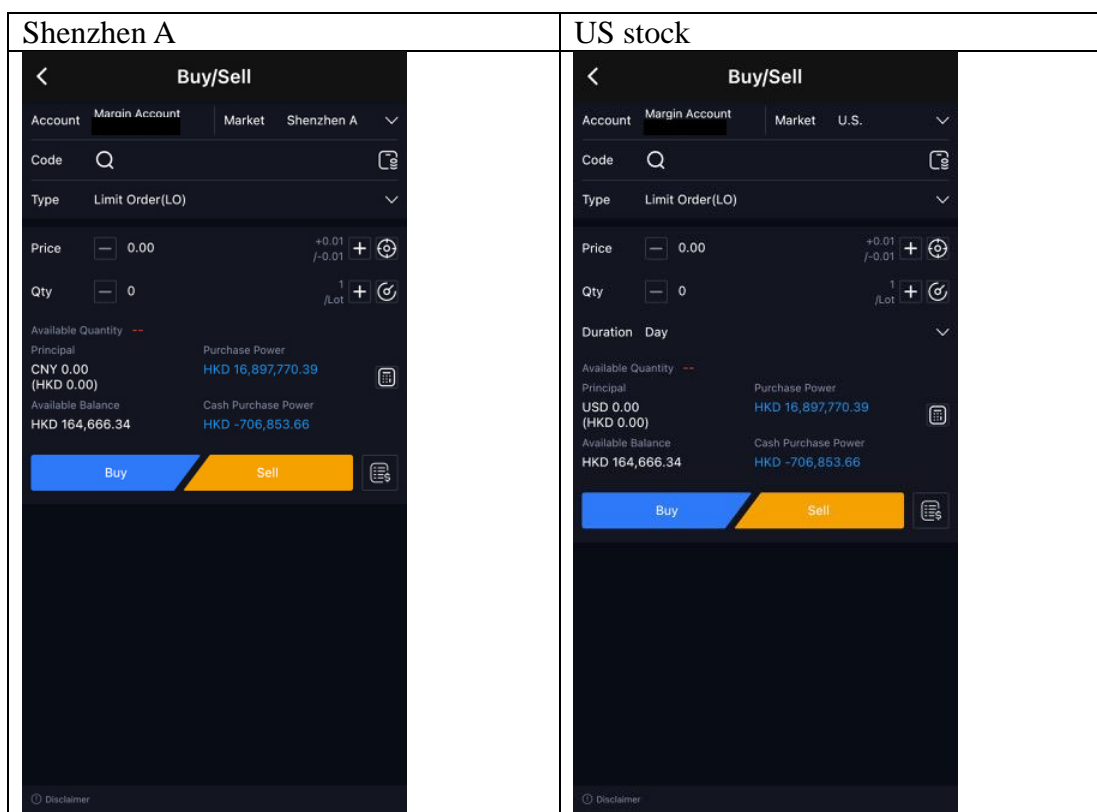
5.1 Stock Trade

1. Select the Market once you enter the “Trade” page, and input the following items:

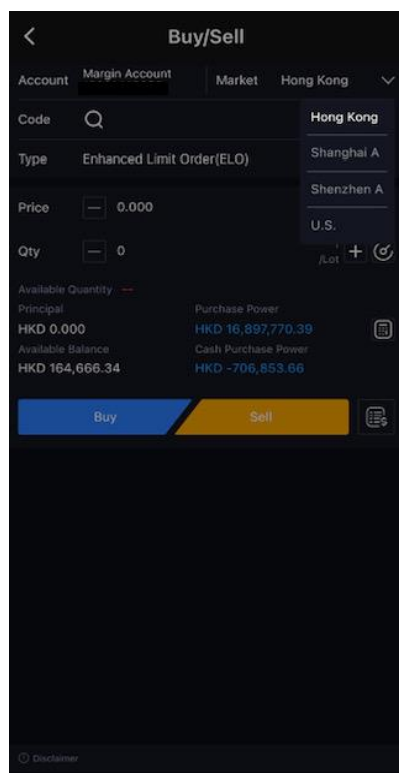
- I. Stock Code
- II. Order Type
- III. Price
- IV. Quantity (Qty)

Finally, select “BUY” or “SELL”.

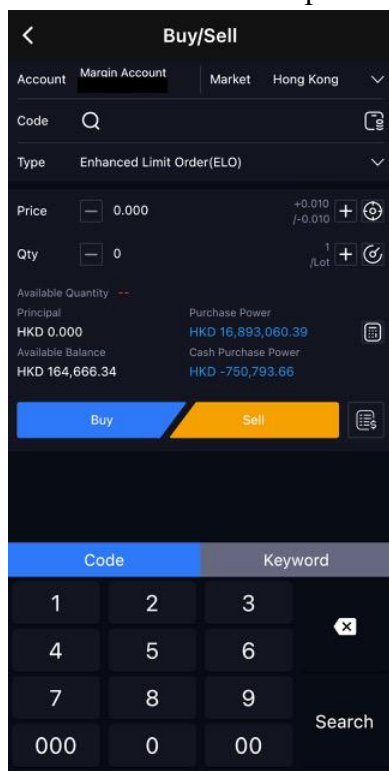





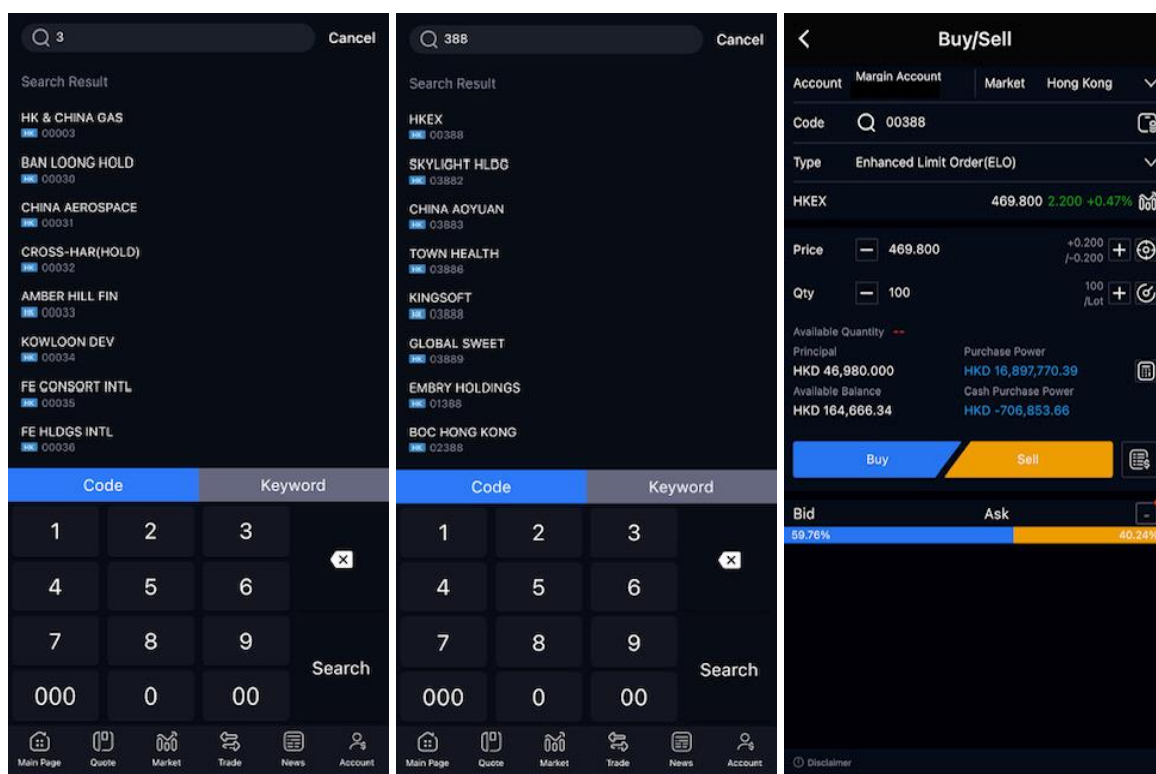
2. Click “Market” field to choose the trading market, including HK market, US market, Shanghai A and Shenzhen A market.



3. Click “Code” field to open the stock code input pad.



Also, click  to input stock code or stock name to search

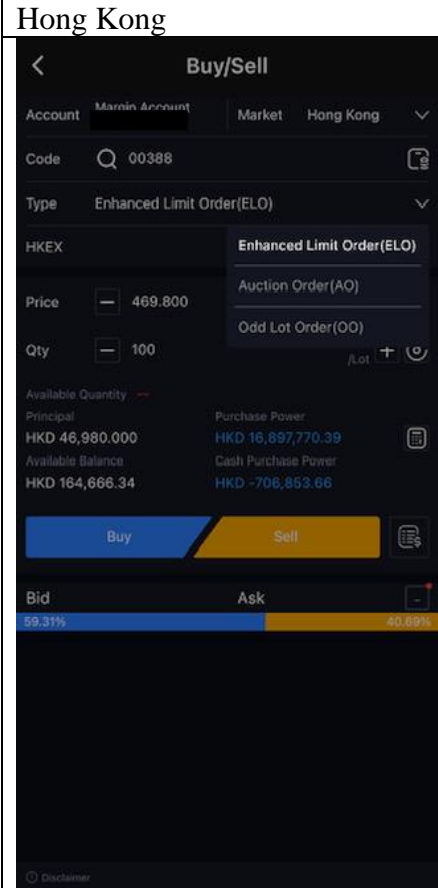
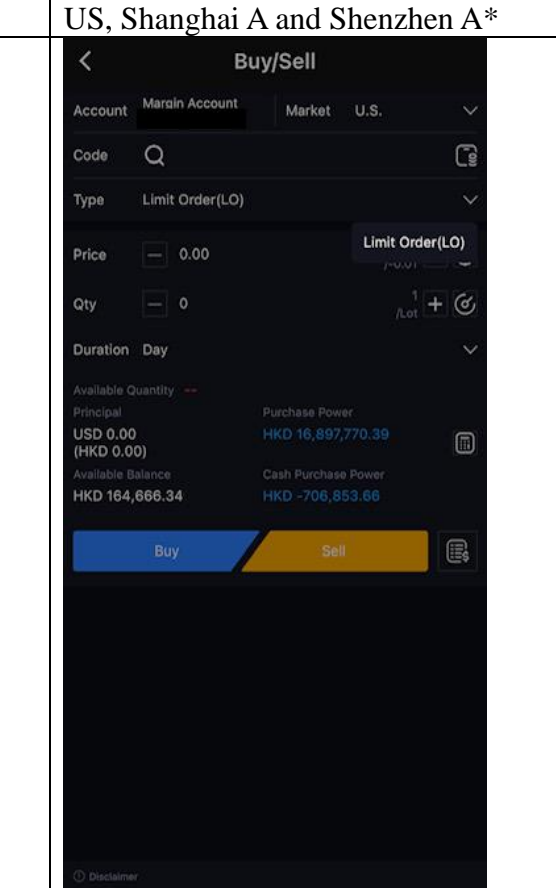




To get latest position, you can press , which is next to “Code” right side

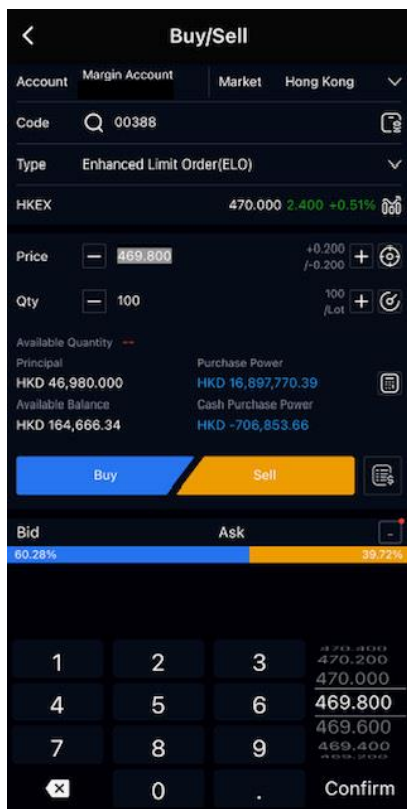
Code	Qty/A	Qty	Moninal/Ref. C	M
CKH HOLDINGS 00001:HK	500	500	52,500 57,900	2
HSBC HOLDING 00005:HK	7,200	7,200	46,850 43,500	33
POWER ASSETS 00006:HK	500	500	47,300 49,650	2
PCCW 00008:HK	14,000	14,000	4,010 4,130	5
ING SENG BANK	100		146,500	1

4. Click “Type” field to choose order type for the market

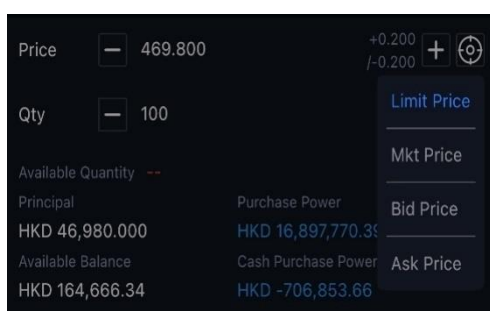
Hong Kong	US, Shanghai A and Shenzhen A*
	

*Stock Connect

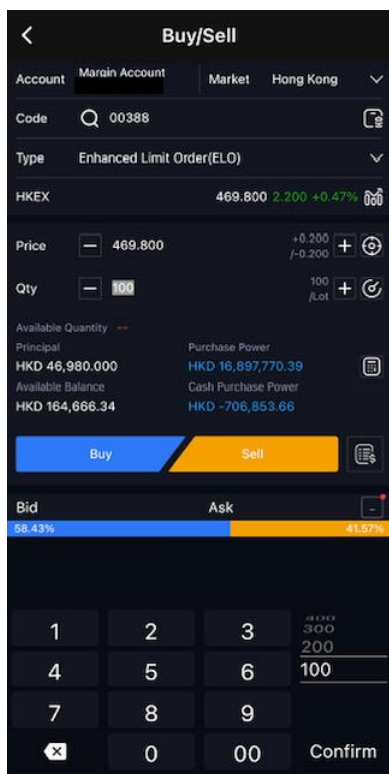
- Click [+] or [-] shown in the “Price” field to adjust the price based on market price.
Click the blank “Price” field, to input the price directly by using the number pad or scrollbar.



Moreover, you can choose the price order type by pressing

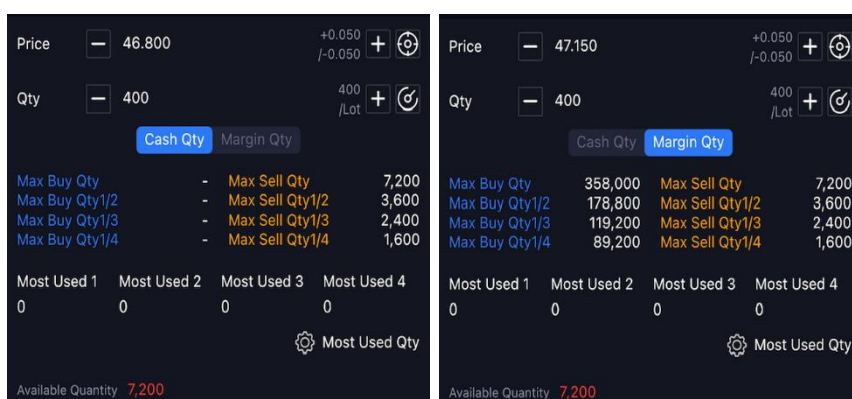


- Click [+] or [-] shown in the “Qty” field to adjust the lot size based on stock trading lot. Click the blank “Qty” field, to input the lot size directly by using the number pad or scrollbar.

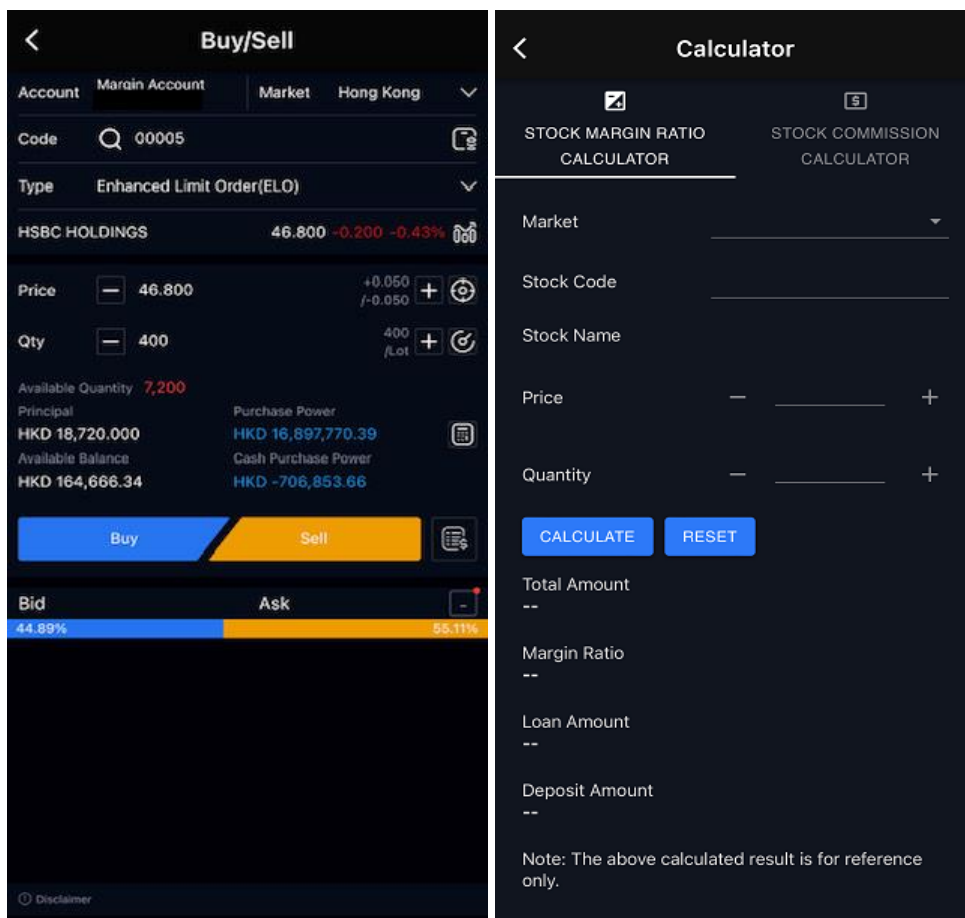


If you want to calculate the maximum buy/sell qty based on your cash or margin portfolio, you

can press 



To calculate the margin or commission, press

Buy/Sell

Account Margin Account Market Hong Kong

Code 00005

Type Enhanced Limit Order(ELO)

HSBC HOLDINGS 46.800 -0.200 -0.43%

Price 46.800 +0.050 / -0.050

Qty 400 400 / Lot

Available Quantity 7,200

Principal HKD 18,720,000 Purchase Power HKD 16,897,770.39

Available Balance HKD 164,666.34 Cash Purchase Power HKD -706,853.66

Buy Sell

Bid 44.89% Ask 55.11%

Disclaimer

Calculator

STOCK MARGIN RATIO CALCULATOR STOCK COMMISSION CALCULATOR

Market

Stock Code

Stock Name

Price - +

Quantity - +

CALCULATE RESET

Total Amount --

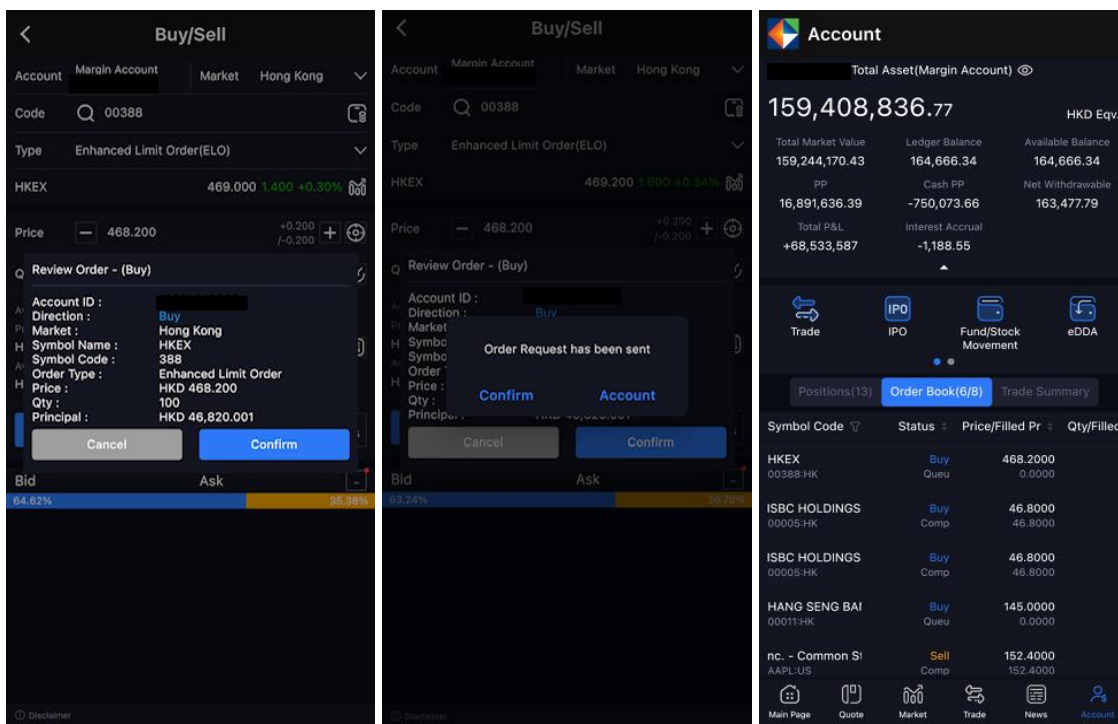
Margin Ratio --

Loan Amount --

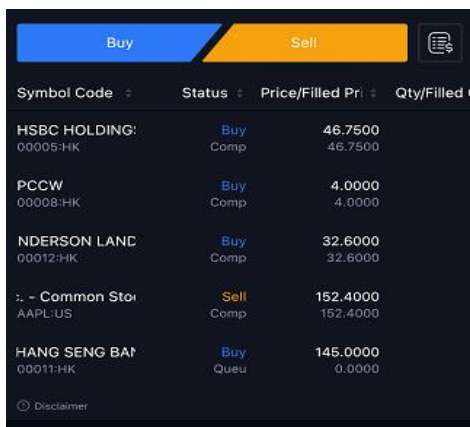
Deposit Amount --

Note: The above calculated result is for reference only.

- Upon completing all order fields, click the corresponding order button (i.e. Buy or Sell button), the page will go to the new order confirmation page so you can check the order details. If you want to make amendment or cancel the order, click [Cancel]. If you would like to confirm the order, click [Confirm]. After the order is submitted, a message “Order Request has been sent” will be displayed. Click [Confirm] to stay on the order ticket page, click [Account] to go to the “Account” page, you can find the order status at the “Order Book” page.



Press  next to “BUY” or “SELL” button, you can check the latest order book.




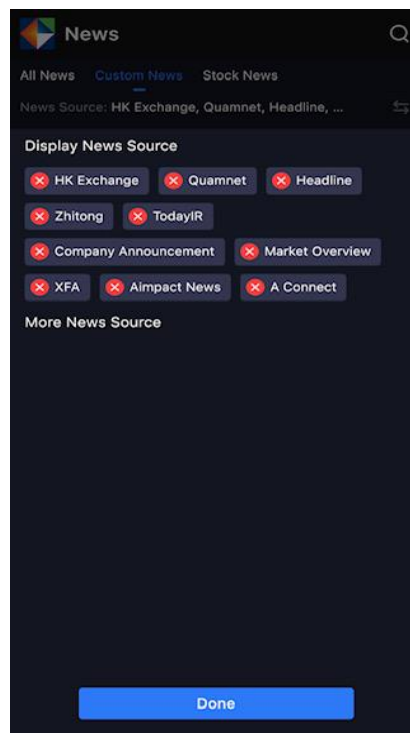
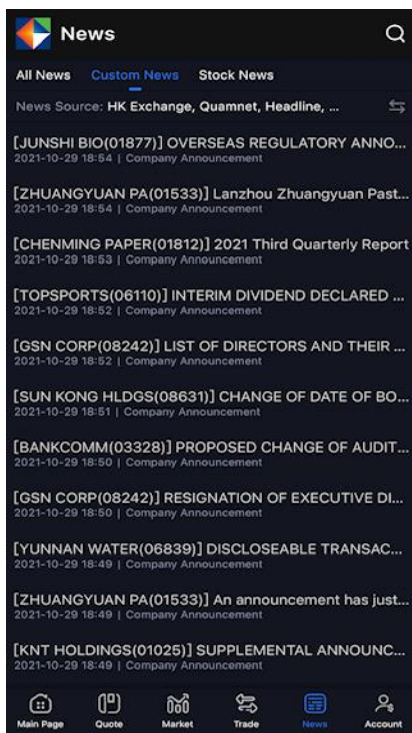
6. News

You can click the “News” button at the bottom right corner to view market news.

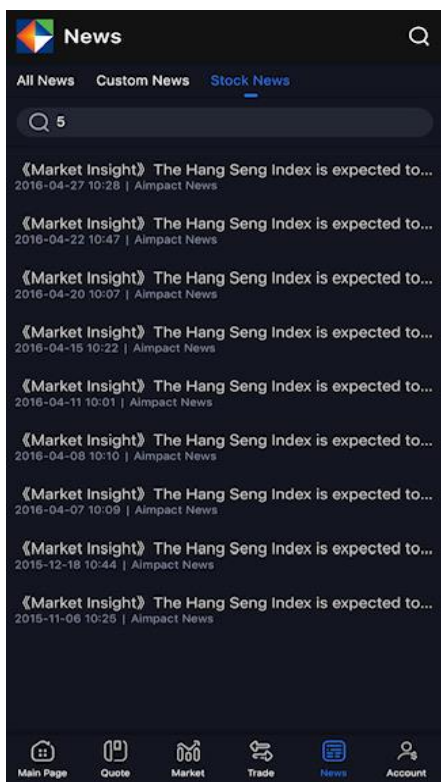


You can choose to view news from different news website after clicking “Custom News”,

then press 



Click “Stock News”, then input stock code to view related news about a specific stock.



7. Logout Procedure

Click “Logout” button at the bottom of “More” page, then click confirm. Your account will be

logged out and you'll be redirected to the "Login" page again.

